



## DLF\_DLH1975

### 19" LCD Display, LED Backlight 1000nits,SXGA(1280x1024)

19" TFT LCD panel, built-in 1000 nits high bright for sunlight readable LCD display, high transmittance color filter, high transmission polarizing plates, Low Power Consumption, suitable for kiosk, advertising, POS, marine, transportation, gaming, studio display, gas pump.

#### Key Features

- Sunlight Readable
- LED Backlight
- SXGA(1280x1024) High Definition
- High Shock & Vibration Resistance
- Low Power Consumption
- High Contrast Ratio (2000:1)
- Wide Viewing Angle (178°(H), 178°(V))
- High Uniformity
- Low EMI Noise
- Wide Dimming
- Life Expectancy



### Specifications

Preliminary

Model No.	DLF1975	DLH1975
<b>Description</b>	19" TFT LCD, LED Backlight 1000nits,SXGA(1280x1024)	
<b>Display Area (mm)</b>	376.32(H) x 301.06 mm	
<b>Brightness</b>	1000 cd/m <sup>2</sup>	
<b>Resolution</b>	1280x1024 (SXGA)	
<b>Contrast Ratio</b>	2000 : 1	
<b>Pixel Pitch (mm)</b>	0.294(H) x 0.294(V)	
<b>Viewing Angle</b>	+89°~-89°(H), +89°~-89°(V)	
<b>Display Colors</b>	16.7M	
<b>Response Time (Typical)</b>	28ms	
<b>Power Consumption</b>	38w	
<b>Dimensions (mm)</b>	396x324x13mm	
<b>Weight (Net)</b>	2.5Kg	
<b>LED Driving Board</b>	LID19A04	
<b>Control Board (Optional)</b>	<input type="checkbox"/> AD5621GA <input type="checkbox"/> AD5621GD <input type="checkbox"/> AD5766GDVA <input type="checkbox"/> AD2662GDVAR	
<input type="checkbox"/> AD5621GA	VGA+Audio	
<input type="checkbox"/> AD5621GD	VGA+DVI	
<input type="checkbox"/> AD5766GDVA	VGA+CVBS+S-Video+Audio (Optional DVI / Component)	
<input type="checkbox"/> AD2662GDVAR	VGA+DVI (Optional S-Video/ Component / Audio)	
<b>F / R Control Button</b>	<input type="checkbox"/> 5 Key <input type="checkbox"/> 4 Key	
<input type="checkbox"/> 5 Key	Power Switch, Menu, Select (+,-), Auto	
<input type="checkbox"/> 4 Key	Power Switch, Menu, Select (+,-),	
<b>OSD Menu</b>	Brightness, Contrast, H/V Position, Color, Phase, Clock...	
<b>Optional</b>	<input type="checkbox"/> AOT <input type="checkbox"/> Touch Screen	

Specifications are subject to change without notice.

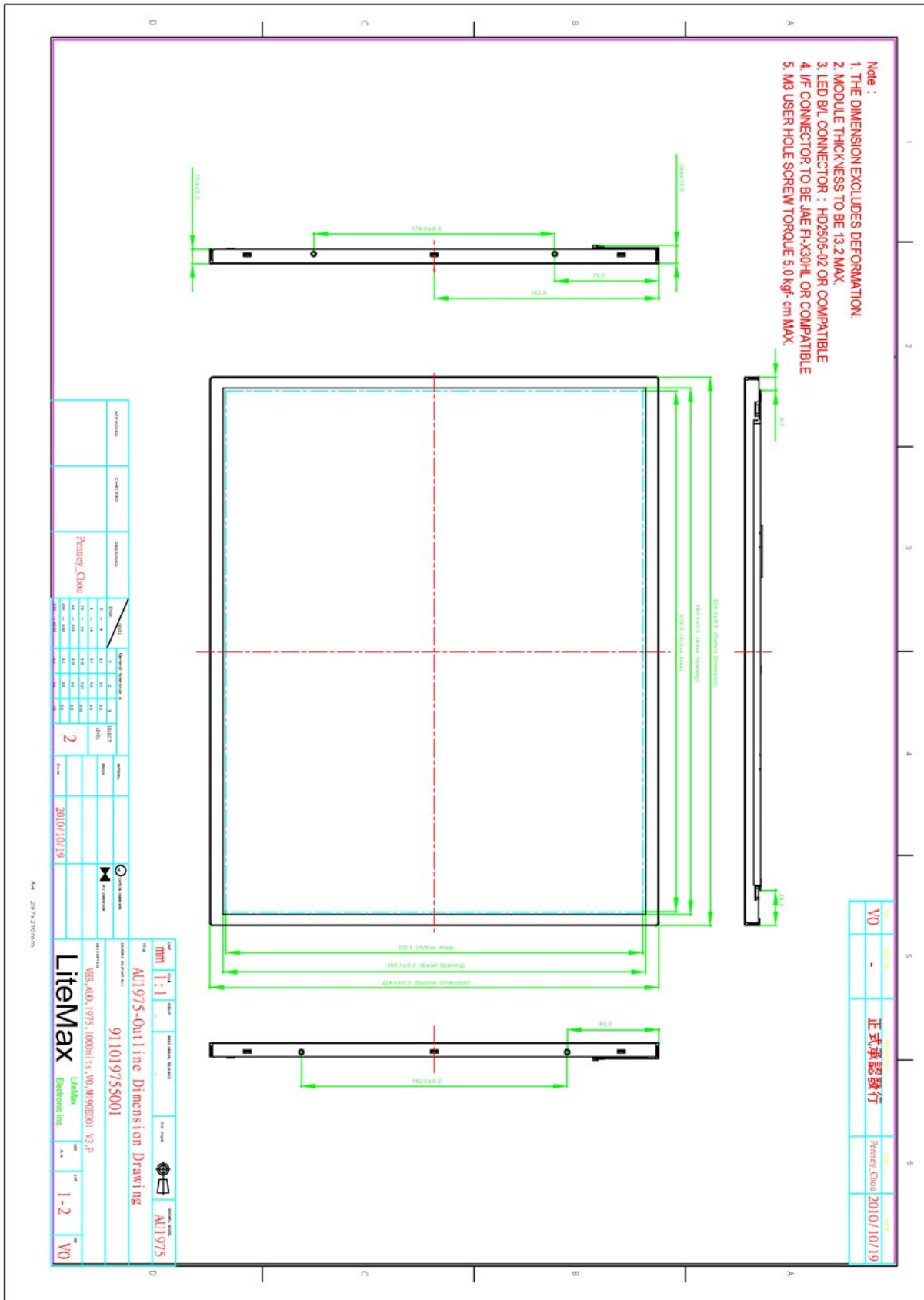
All brands or product names are trademarks or registered trademarks of their respective companies.

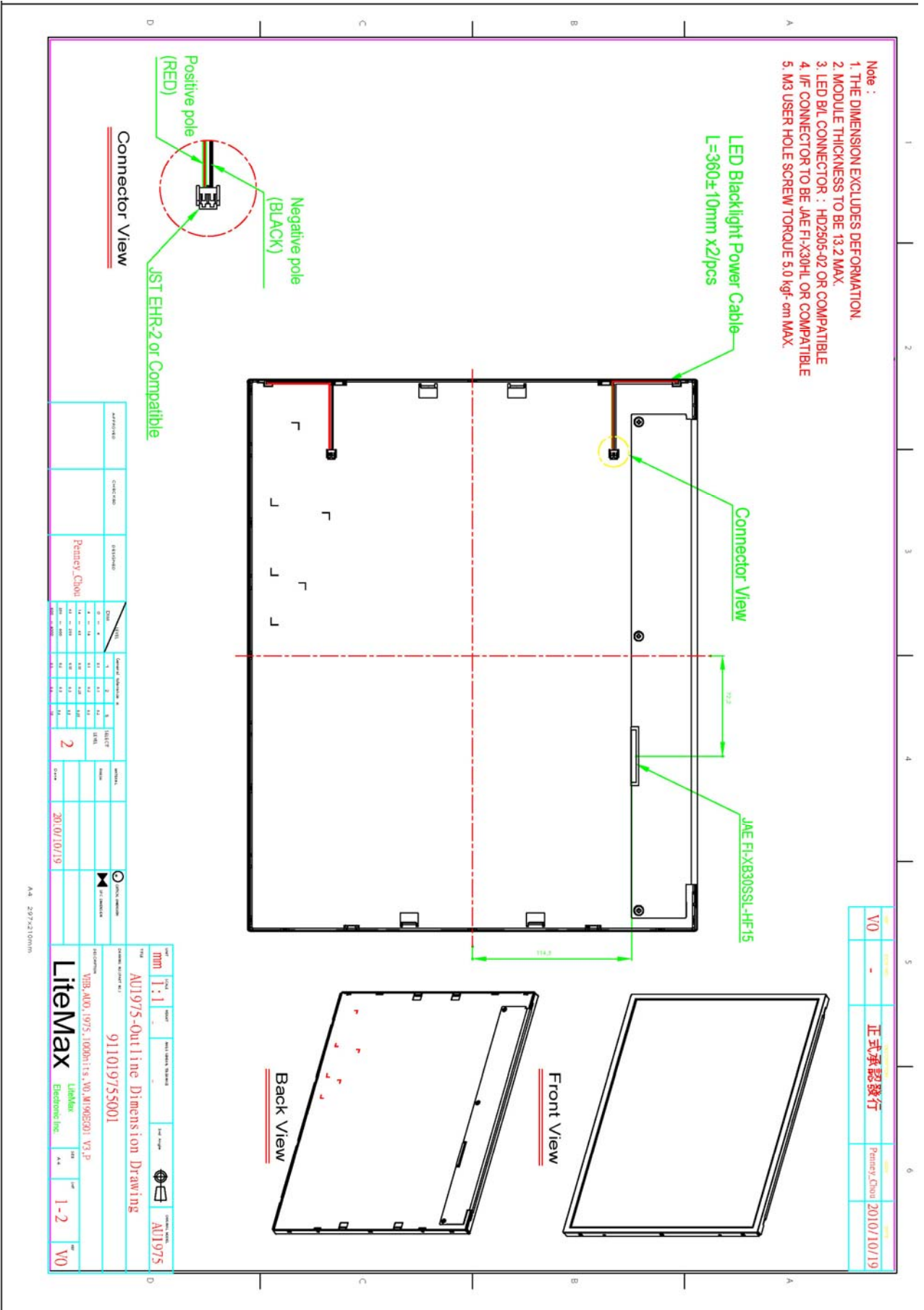


## Mechanical Drawing

### Outline Dimensions

Unit:mm







### Ordering Information

Part Number	Description
<b>DLF1975-ENN-A01</b>	<b>19",1000nits,SXGA,LID19A04,V01.(w/o boss 5 in 1)</b>
<b>DLH1975-ENN-G01</b>	<b>19",1000nits,SXGA,LID19A04,AD2662GD,V01</b>

### Optional Accessories

Part Number	Description
<b>840612051210</b>	<b>ADAPTER,AC/DC,12V/5.4A,65W,A065112-TDx.4P SLIDING CAP,P</b>
<b>810618301010</b>	<b>CABLE.POWER.AC.1830mm USA type</b>
<b>810618301090</b>	<b>CABLE,POWER,AC,1830mm Europe type</b>
<b>810618301050</b>	<b>CABLE.POWER.AC.1830mm UK type</b>
<b>810618301170</b>	<b>CABLE.POWER,AC,1830mm Australia type</b>
<b>810618301030</b>	<b>CABLE.POWER.AC.1830mm Japan type</b>