



## DLF1964 / DLH1964

### 19" TFT LCD, LED Backlight 800nits,SXGA(1280x1024)

19" TFT LCD panel, built-in 800 nits brightness for sunlight readable LCD display, high transmittance color filter, high transmission polarizing plates, Low Power Consumption, suitable for kiosk, advertising, POS, marine, transportation, gaming, studio display, gas pump.

#### Key Features

- Brightness: 800nits
- LED Backlight
- SXGA(1280x1024) High Definition
- High Shock & Vibration Resistance
- Low Power Consumption
- High Uniformity
- Low EMI Noise
- Wide Dimming
- Life Expectancy



### Specifications

Preliminary

Model No.	DLF1964	DLH1964
<b>Description</b>	19" TFT LCD, LED Backlight 800nits,SXGA(1280x1024)	
<b>Display Area (mm)</b>	376.3(H) x 301.1(V)mm	
<b>Brightness</b>	800 cd/m <sup>2</sup>	
<b>Resolution</b>	1280x1024 (SXGA)	
<b>Contrast Ratio</b>	1000 : 1	
<b>Pixel Pitch (mm)</b>	0.294(H) x 0.294(V)	
<b>Viewing Angle</b>	+85°~-85°(H), +80°~-80°(V)	
<b>Display Colors</b>	16.7M	
<b>Response Time (Typical)</b>	5ms	
<b>Power Consumption</b>	19.7W	
<b>Dimensions (mm)</b>	396x324.0x14.5mm	
<b>Weight (Net)</b>	2.4kg	2.45kg
<b>LED Driving Board</b>	LID19A04	
<b>Control Board (Optional)</b>	<input type="checkbox"/> AD5621GA <input type="checkbox"/> AD5621GD <input type="checkbox"/> AD2662GDVAR	
<input type="checkbox"/> AD5621GA	VGA+Audio	
<input type="checkbox"/> AD5621GD	VGA+DVI	
<input type="checkbox"/> AD5766GDVA	VGA+CVBS+S-Video+Audio (Optional DVI / Component)	
<input type="checkbox"/> AD2662GDVAR	VGA+DVI (Optional S-Video/ Component / Audio)	
<b>F / R Control Button</b>	<input type="checkbox"/> 5 Key <input type="checkbox"/> 4 Key	
<input type="checkbox"/> 5 Key	Power Switch, Menu, Select (+,-), Auto	
<input type="checkbox"/> 4 Key	Power Switch, Menu, Select (+,-),	
<b>OSD Menu</b>	Brightness, Contrast, H/V Position, Color, Phase, Clock...	
<b>Optional</b>	<input type="checkbox"/> AOT <input type="checkbox"/> Touch Screen	

Specifications are subject to change without notice.

All brands or product names are trademarks or registered trademarks of their respective companies.

**DLF**= Panel+LED Driving Board

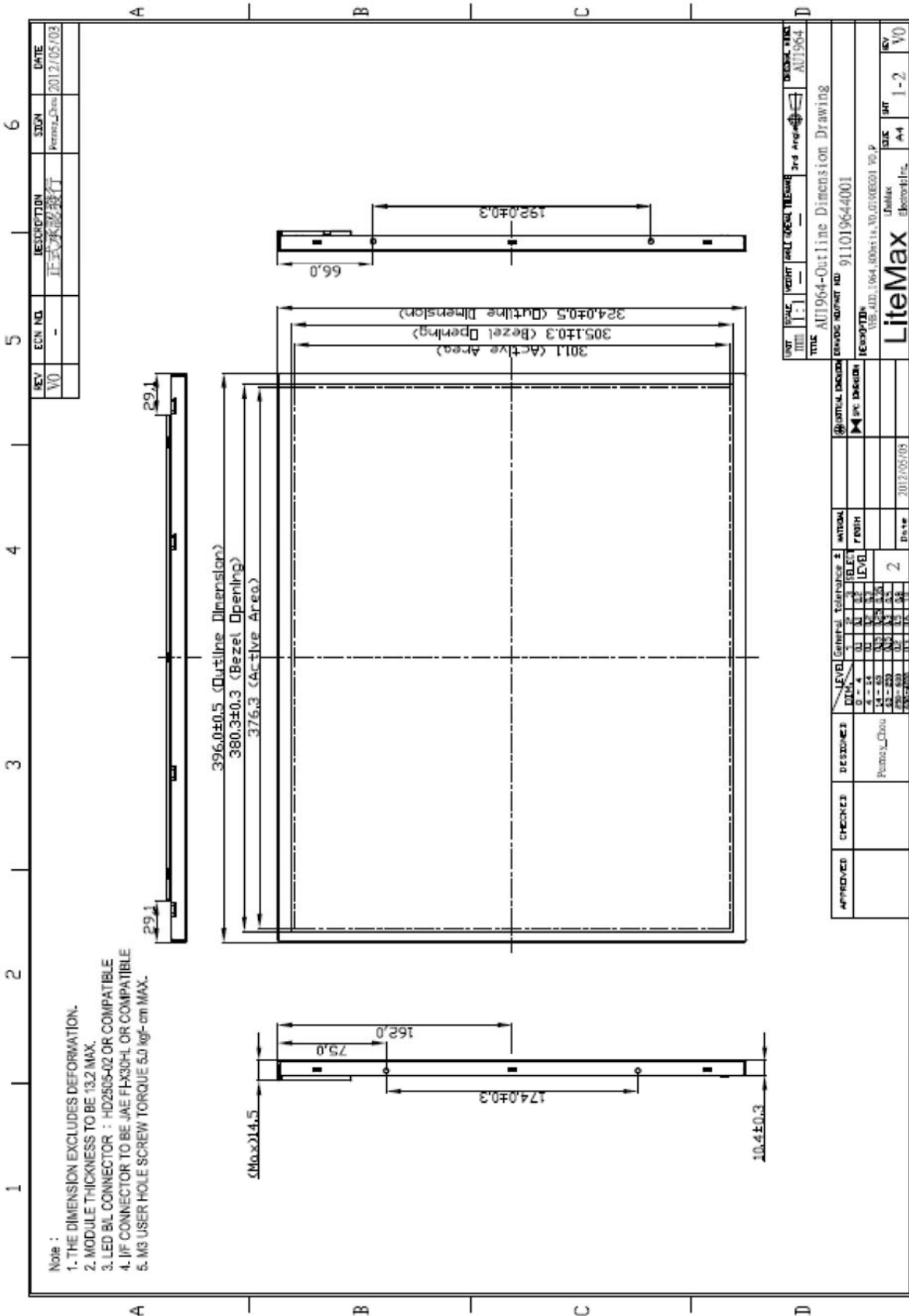
**DLH**= Panel+LED Driving Board+Control Board



## Mechanical Drawing

### Outline Dimensions

Unit:mm







### Ordering Information

Part Number	Description
DLF1964-ENN-A01	19",800nits,SXGA,LID19A.V01(5 in 1)
DLH1964-ENN-G01	19",800nits,SXGA,LID19A.AD2662GD,V01(5 in 1)

### Optional Accessories

Part Number	Description
810618301010	CABLE.POWER.AC.1830mm USA type
810618301090	CABLE,POWER,AC,1830mm Europe type
810618301050	CABLE.POWER.AC.1830mm UK type
810618301170	CABLE.POWER,AC,1830mm Australia type
810618301030	CABLE.POWER.AC.1830mm Japan type