



DLF1825 / DLH1825 V2

18.5" Wide TFT LCD, LED Backlight 1000nits, WXGA

18.5" Wide TFT LCD panel, built-in 1000 nits high bright for sunlight readable LCD display, high transmittance color filter, high transmission polarizing plates, Low Power Consumption, suitable for kiosk, advertising, POS, transportation, gaming, studio display, gas pump.

Key Features

- Sunlight Readable
- LED Backlight
- High Shock & Vibration Resistance
- Low Power Consumption
- High Uniformity
- Low EMI Noise
- Wide Dimming



Specifications

V1

Model No.	DLF1825 V2	DLH1825 V2
Description	18.5" Wide TFT LCD, LED Backlight 1000nits, WXGA	
Display Area (mm)	409.8(H) x 230.4(V) mm	
Brightness	1000 cd/m ²	
Resolution	1366x768 (WXGA)	
Contrast Ratio	1250 : 1	
Pixel Pitch (mm)	0.3(H) x 0.3(V)	
Viewing Angle	+85°~ -85°(H), +80°~ -80°(V)	
Display Colors	16.7M	
Response Time (Typical)	5ms	
Sync	LVDS	
Power Consumption	16W/21W	
Dimensions (mm)	430.4x254.6x13.35	
Weight (Net)	1.3Kg	
LED Driving Board	LID 18A	
Control Board (Optional)	<input type="checkbox"/> AD2662GD <input type="checkbox"/> AD2662GDVAR	
	<input type="checkbox"/> AD2662GD VGA+DVI	
	<input type="checkbox"/> AD2662GDVAR VGA+DVI +CVBS+S-Video+Audio+RS232	
F / R Control Button	<input type="checkbox"/> 5 Key <input type="checkbox"/> 4 Key	
	<input type="checkbox"/> 5 Key Power Switch, Menu, Select (+,-), Auto	
	<input type="checkbox"/> 4 Key Power Switch, Menu, Select (+,-),	
OSD Menu	Brightness, Contrast, H/V Position, Color, Phase, Clock...	
Optional	<input type="checkbox"/> AOT <input type="checkbox"/> Touch Screen	

Specifications are subject to change without notice.

All brands or product names are trademarks or registered trademarks of their respective companies.

DLF= Panel+LED Driving Board

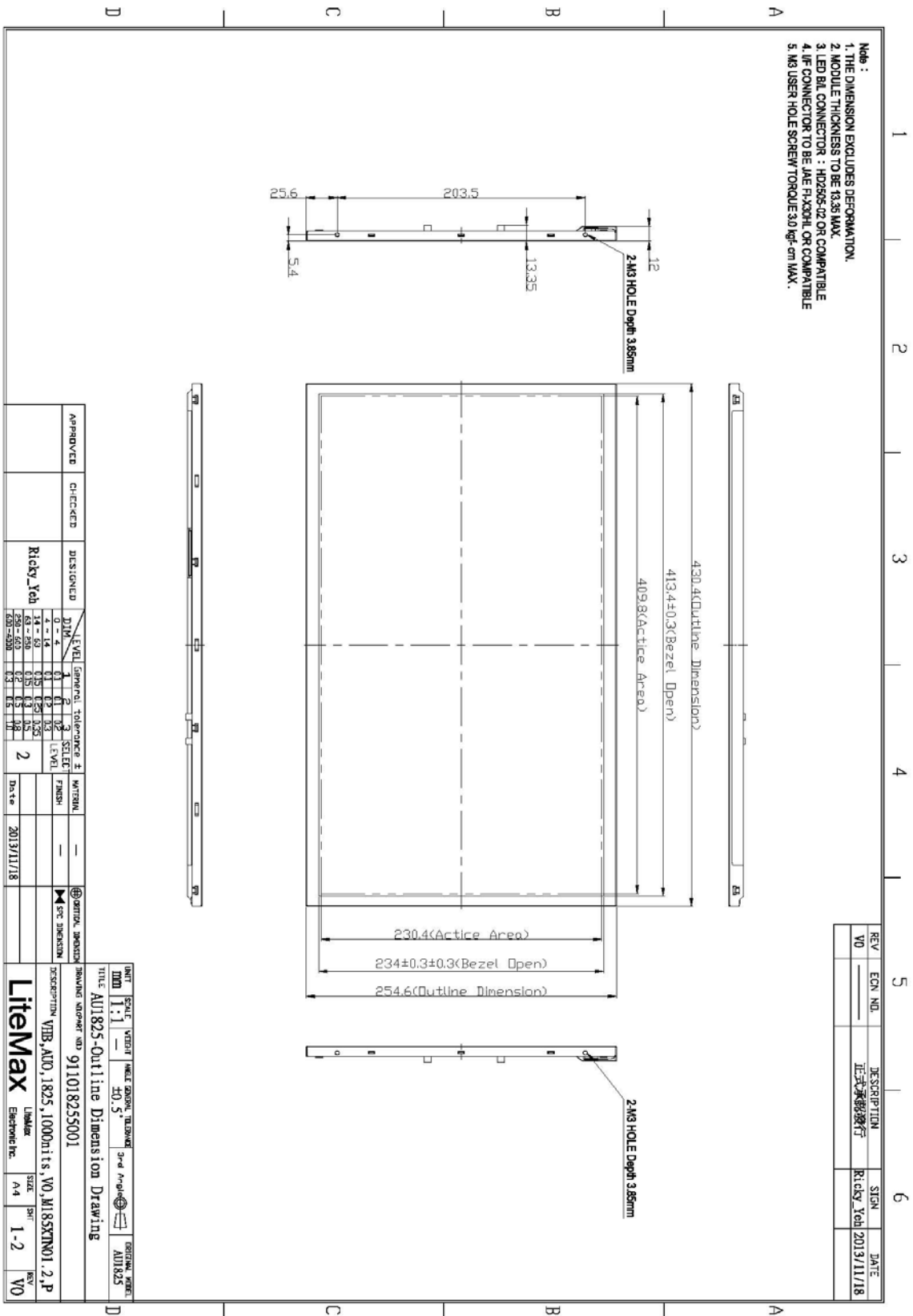
DLH= Panel+LED Driving Board+Control Board

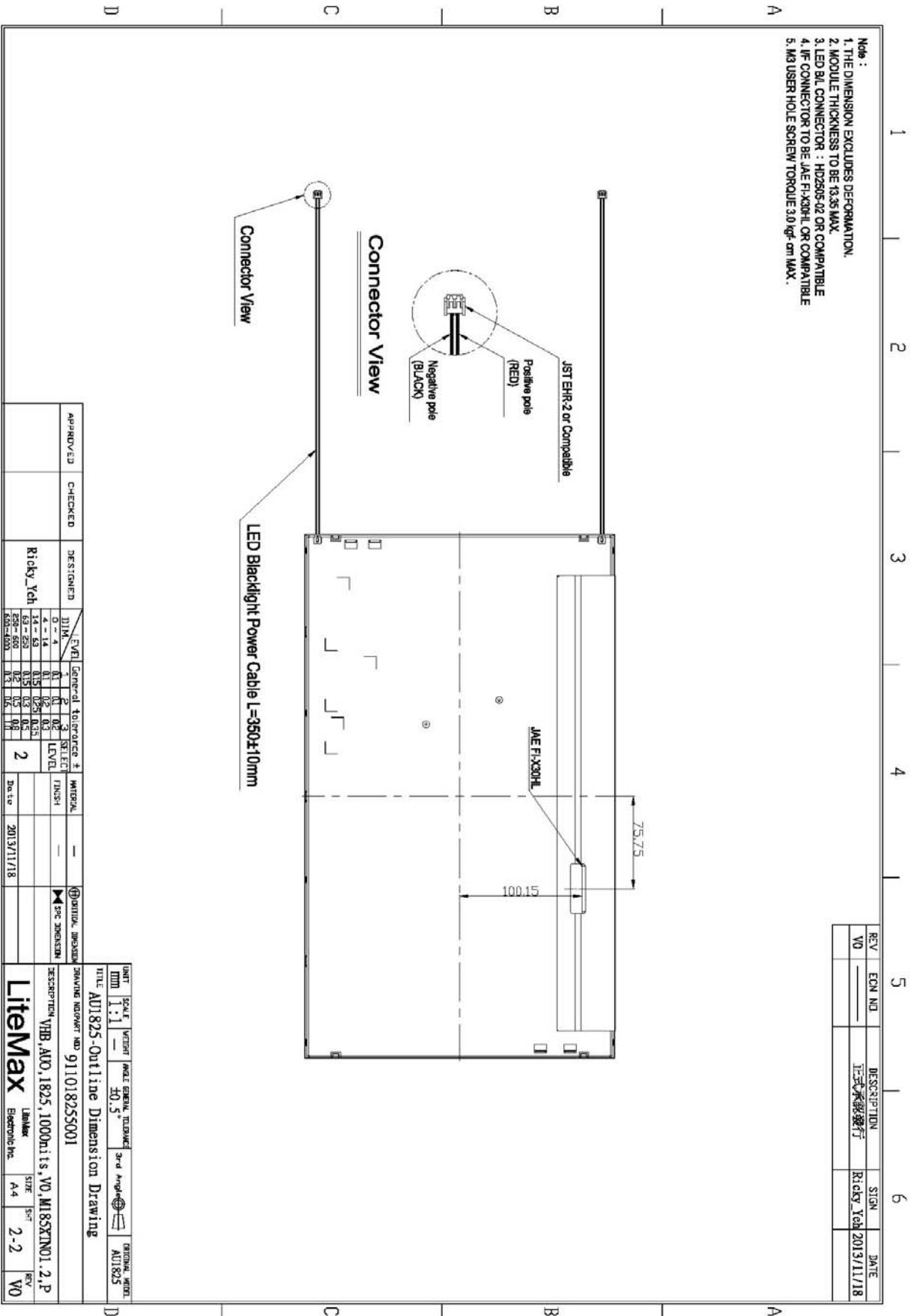


Mechanical Drawing

Outline Dimensions

Unit:mm







Ordering Information

Part Number	Description
DLF1825-ENN-A11	18.5",1000nits,WXGA,LID18A,V2(5 in 1)
DLH1825-ENN-G11	18.5",1000nits,WXGA,LID18A.AD2662GD,DC 12V input.V2(5 in 1)

Optional Accessories

Part Number	Description
840612051210	ADAPTER,AC/DC,12V/5.4A,65W,Atech OEM A065112-TDx.4P SLIDING CAP,P
810618301010	CABLE.POWER.AC.1830mm USA type
810618301090	CABLE,POWER,AC,1830mm Europe type
810618301050	CABLE.POWER.AC.1830mm UK type
810618301170	CABLE.POWER,AC,1830mm Australia type
810618301030	CABLE.POWER.AC.1830mm Japan type