



DLF1764 / DLH1764

17" TFT LCD, LED Backlight 800nits,SXGA(1280x1024)

17" TFT LCD panel, built-in 800 nits high bright for LCD display, high transmittance color filter, high transmission polarizing plates, Low Power Consumption, suitable for kiosk, advertising, POS, marine, transportation, gaming, studio display, gas pump.

Key Features

- 800nits Brightness
- LED Backlight
- SXGA(1280x1024) High Definition
- High Shock & Vibration Resistance
- Low Power Consumption
- Low EMI Noise
- Wide Dimming
- Life Expectancy



Specifications

Preliminary

Model No.	DLF1764	DLH1764
Description	17" TFT LCD, LED Backlight 800nits,SXGA(1280x1024)	
Display Area (mm)	337.9(H) x 270.3(V) mm	
Brightness	800 cd/m ²	
Resolution	1280x1024 (SXGA)	
Contrast Ratio	1000 : 1	
Pixel Pitch (mm)	0.264(H) x 0.264(V)	
Viewing Angle	+85°~-85°(H), +80°~-80°(V)	
Display Colors	16.7M	
Response Time (Typical)	5ms	
Power Consumption	16.3W	
Dimensions (mm)	358.5x296.5x14.5mm	
Weight (Net)	2.0kg	
LED Driving Board	LID17A08	
Control Board (Optional)	<input type="checkbox"/> AD5621GA <input type="checkbox"/> AD5621GD <input type="checkbox"/> AD2662GDVAR	
<input type="checkbox"/> AD5621GA	VGA+Audio	
<input type="checkbox"/> AD5621GD	VGA+DVI	
<input type="checkbox"/> AD2662GDVAR	VGA+DVI (Optional S-Video/ Component / Audio)	
F / R Control Button	<input type="checkbox"/> 5 Key <input type="checkbox"/> 4 Key	
<input type="checkbox"/> 5 Key	Power Switch, Menu, Select (+,-), Auto	
<input type="checkbox"/> 4 Key	Power Switch, Menu, Select (+,-),	
OSD Menu	Brightness, Contrast, H/V Position, Color, Phase, Clock...	
Optional	<input type="checkbox"/> AOT <input type="checkbox"/> Touch Screen	

Specifications are subject to change without notice.

All brands or product names are trademarks or registered trademarks of their respective companies.

DLF= Panel+LED Driving Board

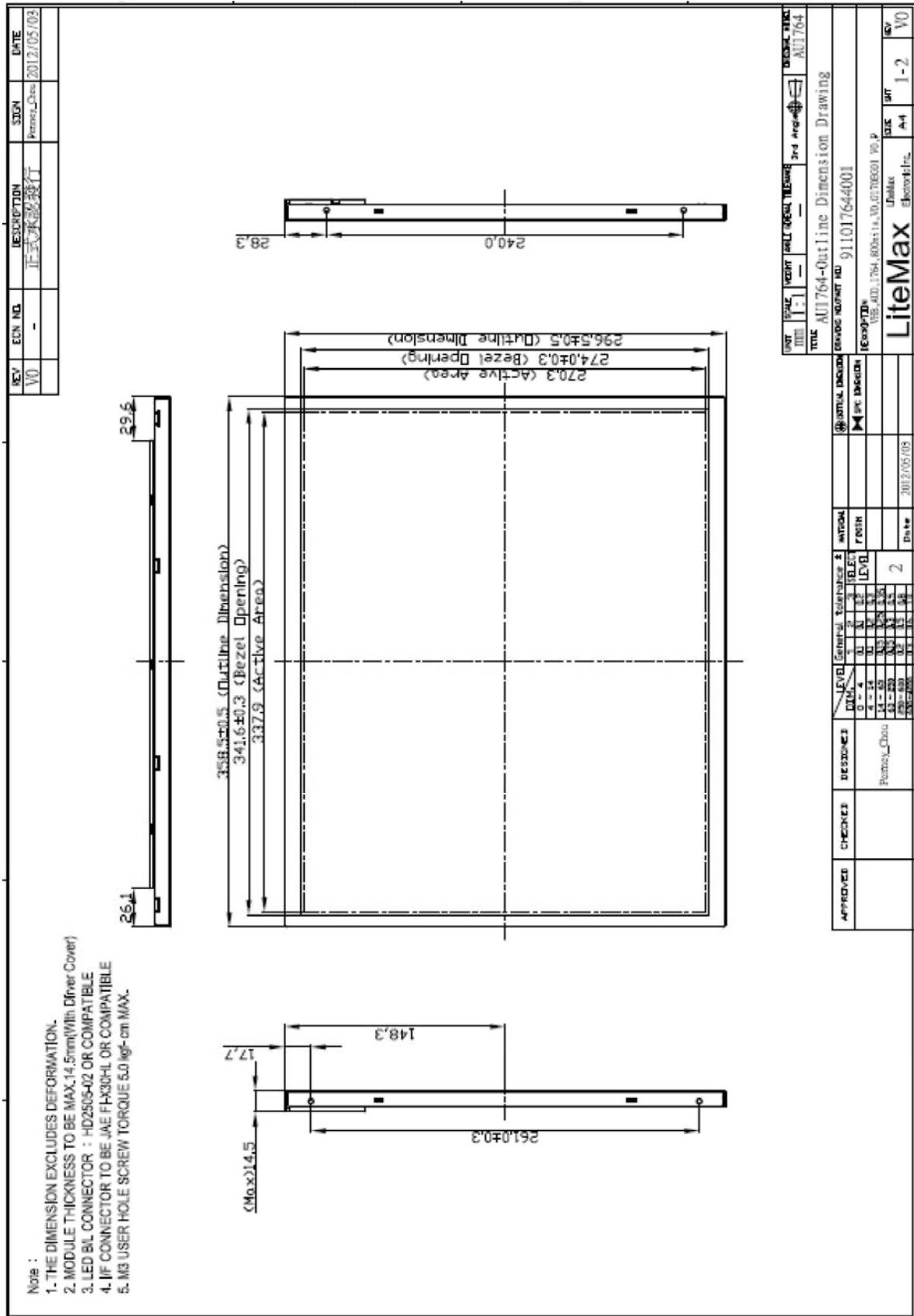
DLH= Panel+LED Driving Board+Control Board

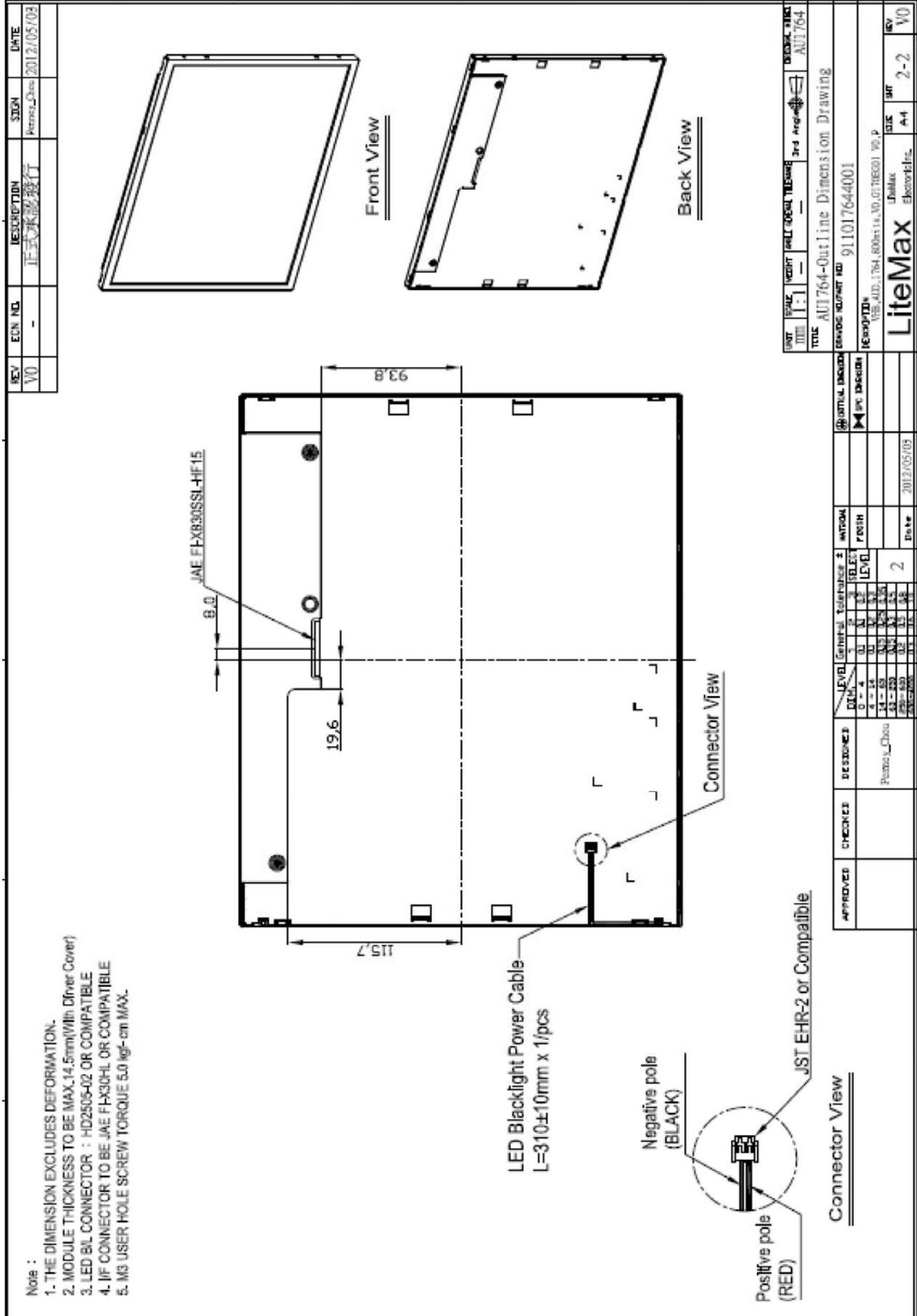


Mechanical Drawing

Outline Dimensions

Unit:mm







Ordering Information

Part Number	Description
DLF1764-ENN-A01	17",800nits,SXGA,LID17A06,V01
DLH1764-ENN-G01	17",800nits,SXGA,LID17A06,AD2662GD,V01

Optional Accessories

Part Number	Description
810618301010	CABLE.POWER.AC.1830mm USA type
810618301090	CABLE,POWER,AC,1830mm Europe type
810618301050	CABLE.POWER.AC.1830mm UK type
810618301170	CABLE.POWER,AC,1830mm Australia type
810618301030	CABLE.POWER.AC.1830mm Japan type