



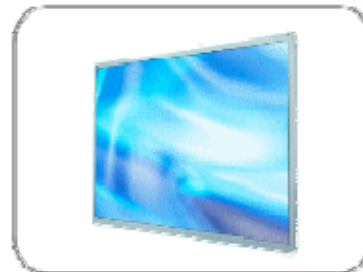
DLF1744 / DLH1744

17" TFT LCD, LED Backlight 1000nits,SXGA

17" TFT LCD panel, built-in 1000 nits high bright for sunlight readable LCD display, high transmittance color filter, high transmission polarizing plates, Low Power Consumption, suitable for kiosk, advertising, POS, marine, transportation, gaming, studio display, gas pump.

Key Features

- Sunlight Readable
- LED Backlight
- High Shock & Vibration Resistance
- Low Power Consumption
- Wide Operation Temperature.
- High Uniformity (90%)
- Low EMI Noise
- Wide Dimming
- Life Expectancy (70,000hrs)



Specifications

V1

Model No.	DLF1744	DLH1744
Description	17" TFT LCD, LED Backlight 1000nits,SXGA	
Display Area (mm)	337.92 x 270.336 mm	
Brightness	1000 cd/m ²	
Resolution	1280x1024 (SXGA)	
Contrast Ratio	800 : 1	
Pixel Pitch (mm)	0.264(H) x 0.264(V)	
Viewing Angle	+80°~-80°(H), +80°~-80°(V)	
Display Colors	16.7M	
Response Time (Typical)	5ms	
Sync	LVDS	
Power Consumption	35W	
Dimensions (mm)	358.5x296.5x15.8	
Weight (Net)	2.16Kg	
LED Driving Board	LID 17A01	
Control Board (Optional)	<input type="checkbox"/> AD5621GA <input type="checkbox"/> AD5621GD <input type="checkbox"/> AD5766GDVA <input type="checkbox"/> AD2662GDVAR	
	<input type="checkbox"/> AD5621GA	VGA+Audio
	<input type="checkbox"/> AD5621GD	VGA+DVI
	<input type="checkbox"/> AD5766GDVA	VGA+CVBS+S-Video+Audio (Optional DVI / Component)
	<input type="checkbox"/> AD2662GDVAR	VGA+DVI (Optional S-Video/ Component / Audio)
F / R Control Button	<input type="checkbox"/> 5 Key <input type="checkbox"/> 4 Key	
	<input type="checkbox"/> 5 Key	Power Switch, Menu, Select (+,-), Auto
	<input type="checkbox"/> 4 Key	Power Switch, Menu, Select (+,-),
OSD Menu	Brightness, Contrast, H/V Position, Color, Phase, Clock...	
Optional	<input type="checkbox"/> AOT <input type="checkbox"/> Touch Screen	

Specifications are subject to change without notice.

All brands or product names are trademarks or registered trademarks of their respective companies.

DLF= Panel+LED Driving Board

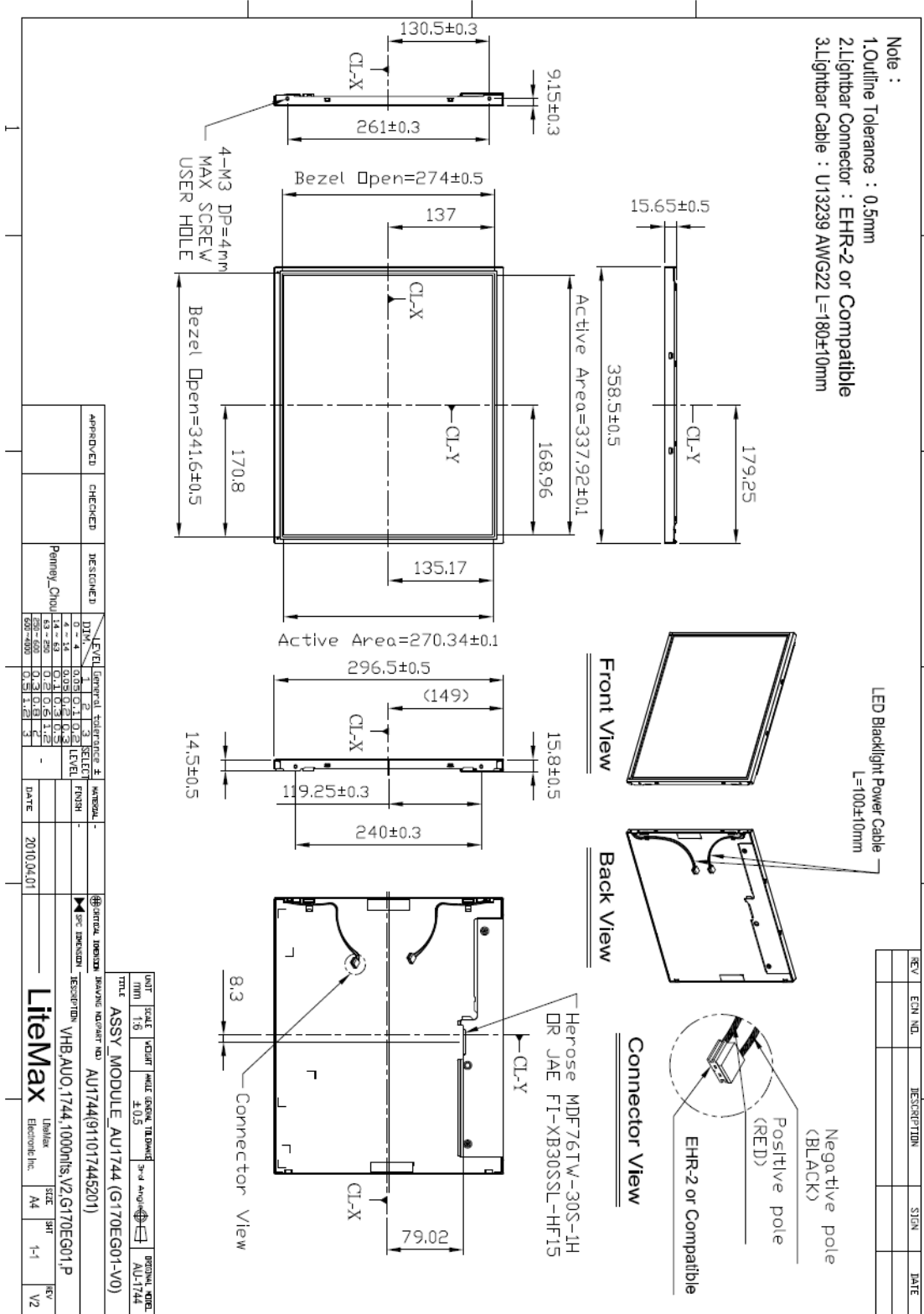
DLH= Panel+LED Driving Board+Control Board



Mechanical Drawing

Outline Dimensions

Unit:mm



LEVEL	DESCRIPTION	DATE
0-1	INITIAL	
0-2	DESIGN	
0-3	CHECK	
0-4	APPROVE	
0-5	FINAL	

APPROVED	CHECKED	DESIGNED	DATE
		Pattany Chou	2010/04/01

UNIT	SCALE	SCALE	SCALE	SCALE	SCALE	SCALE	SCALE	SCALE	SCALE
MM	1:1	1:1	1:1	1:1	1:1	1:1	1:1	1:1	1:1

TITLE	ASSY MODULE_AU1744 (G170EG01-V0)
DATE	2010/04/01
REV	V2

REV	EQ. NO.	DESCRIPTION	SIGN	DATE



Ordering Information

Part Number	Description
DLF1744-ENN-A01	17",1000nits,SXGA,LID17A01,V01
DLH1744-ENN-A01	17",1000nits,SXGA,LID17A01.AD5621GA,V01
DLH1744-ENN-B01	17",1000nits,SXGA,LID17A01.AD5621GD,V01
DLH1744-ENN-C01	17",1000nits,SXGA,LID17A01.AD5766GDV,V01

Optional Accessories

Part Number	Description
840612051100	ADAPTER.12V.5A.60W.EA1050A,P
810618301010	CABLE.POWER.AC.1830mm USA type
810618301090	CABLE,POWER,AC,1830mm Europe type
810618301050	CABLE.POWER.AC.1830mm UK type
810618301170	CABLE.POWER,AC,1830mm Australia type
810618301030	CABLE.POWER.AC.1830mm Japan type