



DLF1555 / DLH1555

15" TFT LCD, LED Backlight 1500 or 1000nits,XGA

15" TFT LCD panel, built-in 1500 or 1000 nits high bright for sunlight readable LCD display, high transmittance color filter, high transmission polarizing plates, Low Power Consumption, suitable for kiosk, advertising, POS, marine, transportation, gaming, studio display, gas pump.

Key Features

- Sunlight Readable
- LED Backlight
- High Shock & Vibration Resistance
- Low Power Consumption
- Wide Operation Temperature. (-30°C ~ 70°C)
- High Uniformity (90%)
- Low EMI Noise
- Wide Dimming
- Life Expectancy (70,000hrs)



Specifications

V3

Model No.	DLF1555	DLH1555
Description	15" TFT LCD, LED Backlight 1500 or 1000nits,XGA	
Display Area (mm)	304.128 x 228.096 mm	
Brightness	1500 / 1000 cd/m ²	
Resolution	1024x768 (XGA)	
Contrast Ratio	700 : 1	
Pixel Pitch (mm)	0.297(H) x 0.297(V)	
Viewing Angle	+80°~-80°(H), +80°~-80°(V)	
Display Colors	16.2M	
Response Time (Typical)	25ms	
Sync	LVDS	
Power Consumption	25W	
Dimensions (mm)	326.5x253.5x14.5	
Weight (Net)	1.33Kg	
LED Driving Board	LID 15A01 / LID 15A02	
Control Board (Optional)	<input type="checkbox"/> AD5621GA <input type="checkbox"/> AD5621GD <input type="checkbox"/> AD5766GDVA <input type="checkbox"/> AD2662GDVAR	
<input type="checkbox"/> AD5621GA	VGA+Audio	
<input type="checkbox"/> AD5621GD	VGA+DVI	
<input type="checkbox"/> AD5766GDVA	VGA+CVBS+S-Video+Audio (Optional DVI / Component)	
<input type="checkbox"/> AD2662GDVAR	VGA+DVI (Optional S-Video/ Component / Audio)	
F / R Control Button	<input type="checkbox"/> 5 Key <input type="checkbox"/> 4 Key	
<input type="checkbox"/> 5 Key	Power Switch, Menu, Select (+,-), Auto	
<input type="checkbox"/> 4 Key	Power Switch, Menu, Select (+,-),	
OSD Menu	Brightness, Contrast, H/V Position, Color, Phase, Clock...	
Optional	<input type="checkbox"/> AOT <input type="checkbox"/> Touch Screen	

Specifications are subject to change without notice.

All brands or product names are trademarks or registered trademarks of their respective companies.

DLF= Panel+LED Driving Board

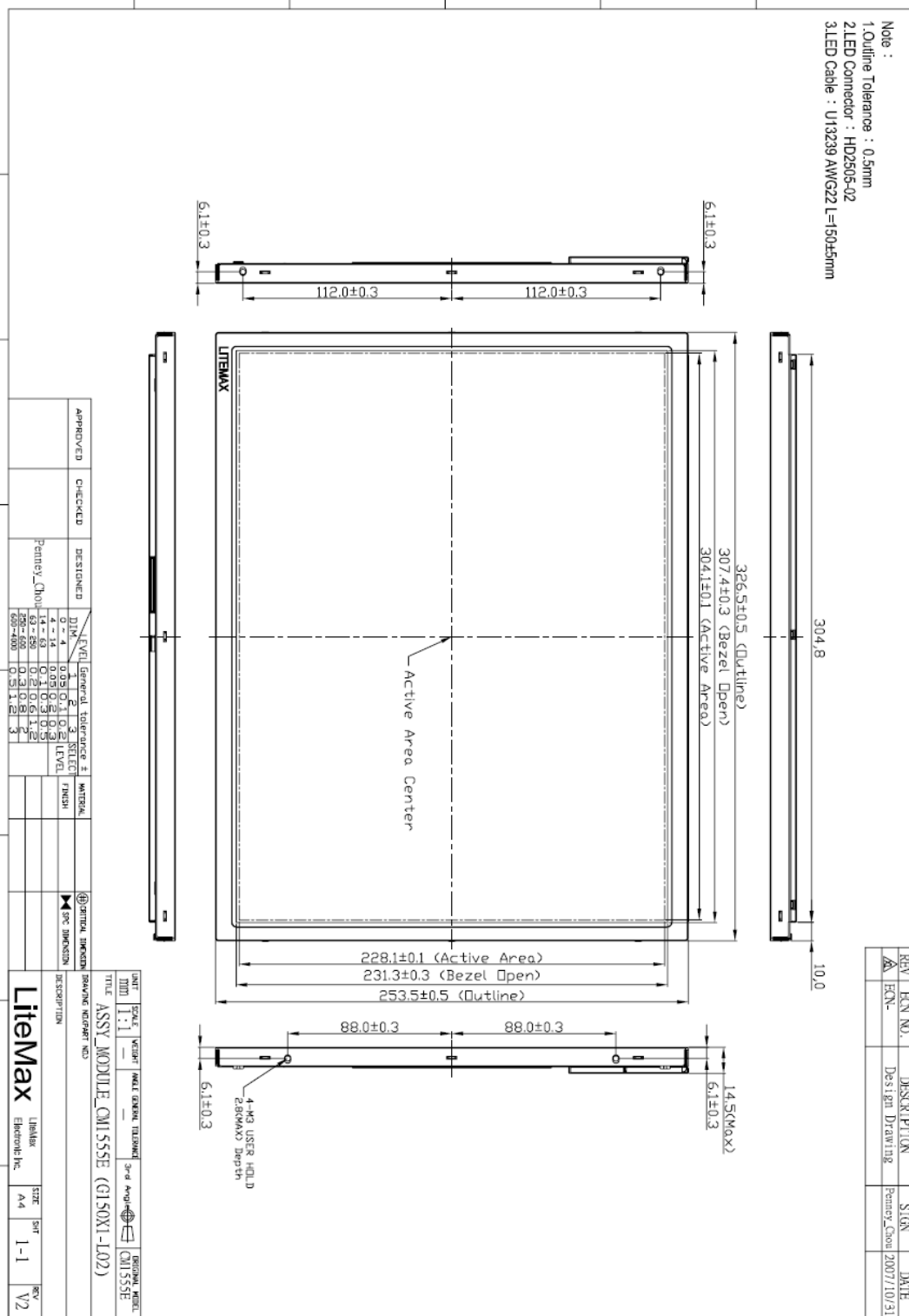
DLH= Panel+LED Driving Board+Control Board



Mechanical Drawing

Outline Dimensions

Unit:mm



Ordering Information



Part Number	Description
DLF1555-ENN-A02	15",1000nits, XGA,LID15A02,V01
DLF1555-ENN-A03	15",1500nits,XGA,LID15A01,V01
DLH1555-ENN-A02	15",1500nits,XGA,LID15A01.AD5621G,V01
DLH1555-ENN-A04	15",1000nits, XGA.LID15A02,AD5621G,V01
DLH1555-ENN-A05	15",1000nits,XGA,LID15A02.AD5621GA,V01
DLH1555-ENN-B03	15",1000nits, XGA.LID15A02,AD5621GD,V01
DLH1555-ENN-C03	15",1000nits, XGA.LID15A02,AD5766GDV,V01
DLH1555-ENN-C04	15",1000nits,XGA.LID15A02.AD5766GDVA w/o connector,V01
DLH1555-ENNH-B01	15",1000nits,XGA,LID15A02.AD5621GD,heater,v01
DLH1555-ENNL-A05	15",1500nits,XGA.LID15A01,AD5621G,LS,V01
OLH1555-EGN-A01	15",1500nits, XGA,LID15A01.AD5621G,AR glass,AOT-V1,V01
OLH1555-EGN-A02	15",1000nits, XGA,LID15A02.AD5621G,AR glass,AOT-V1,V01
OLH1555-EGN-B01	15",1500nits, XGA,LID15A01.AD5621GD,AR glass,AOT-V1,V01
OLH1555-EGN-B02	15",1000nits, XGA,LID15A02.AD5621GD,AR glass,AOT-V1,V01
OLH1555-EGN-C01	15",1500nits, XGA,LID15A01.AD5766GDVA,AR glass,AOT-V1,V01
OLH1555-EGN-C02	15",1000nits, XGA,LID15A02.AD5766GDV,AR glass,AOT-V1,V01

Optional Accessories

Part Number	Description
840612051100	ADAPTER.12V.5A.60W.EA1050A,P
810618301010	CABLE.POWER.AC.1830mm USA type
810618301090	CABLE,POWER,AC,1830mm Europe type
810618301050	CABLE.POWER.AC.1830mm UK type
810618301170	CABLE.POWER,AC,1830mm Australia type
810618301030	CABLE.POWER.AC.1830mm Japan type