



## DLF1236 V2 / DLH236 V2

### 12.1" TFT LCD, LED Backlight 1000nits,XGA(1024x768)

19" TFT LCD panel, built-in 1600 nits brightness for sunlight readable LCD display, high transmittance color filter, high transmission polarizing plates, Low Power Consumption, suitable for kiosk, automation, POS, transportation, gas pump.

#### Key Features

- Brightness: 1000nits
- LED Backlight
- XGA(1024x768)
- High Shock & Vibration Resistance
- Low Power Consumption
- High Uniformity & Low EMI Noise
- Wide Temperature
- Life Expectancy



### Specifications

Ver2

Model No.	DLF1236 V2	DLH1236 V2
Description	12.1" TFT LCD, LED Backlight ,1000nits,XGA(1024x768)	
Display Area (mm)	245.76(H) x 184.32(V)mm	
Brightness	1000 cd/m <sup>2</sup>	
Resolution	1024x768 (XGA)	
Contrast Ratio	700 : 1	
Pixel Pitch (mm)	0.24(H) x 0.24(V)	
Viewing Angle	+80°~-80°(H), +70°~-70°(V)	
Display Colors	16.2M	
Response Time (Typical)	16ms	
Power Consumption	9.6W	11.6W
Dimensions (mm)	260.5x204.0x8.4mm	
Weight (Net)	0.55kg	0.6kg
LED Driving Board	LID12A07	
Control Board (Optional)	<input type="checkbox"/> AD6038GA <input type="checkbox"/> AD6038GD <input type="checkbox"/> AD2662GDVAR <input type="checkbox"/> AD2662GDHMVAR	
<input type="checkbox"/> AD6038GA	VGA+Audio	
<input type="checkbox"/> AD6038GD	VGA+DVI	
<input type="checkbox"/> AD2662GDVAR	VGA+DVI (Optional S-Video/ Component / Audio)	
<input type="checkbox"/> AD2662GDHMVAR	VGA (Optional DVI-D / HDMI / S-Video/ Component / Audio)	
F / R Control Button	<input type="checkbox"/> 5 Key <input type="checkbox"/> 4 Key	
<input type="checkbox"/> 5 Key	Power Switch, Menu, Select (+,-), Auto	
<input type="checkbox"/> 4 Key	Power Switch, Menu, Select (+,-),	
OSD Menu	Brightness, Contrast, H/V Position, Color, Phase, Clock...	
Optional	<input type="checkbox"/> AOT <input type="checkbox"/> Touch Screen	

*Specifications are subject to change without notice.*

*All brands or product names are trademarks or registered trademarks of their respective companies.*

**DLF**= Panel+LED Driving Board

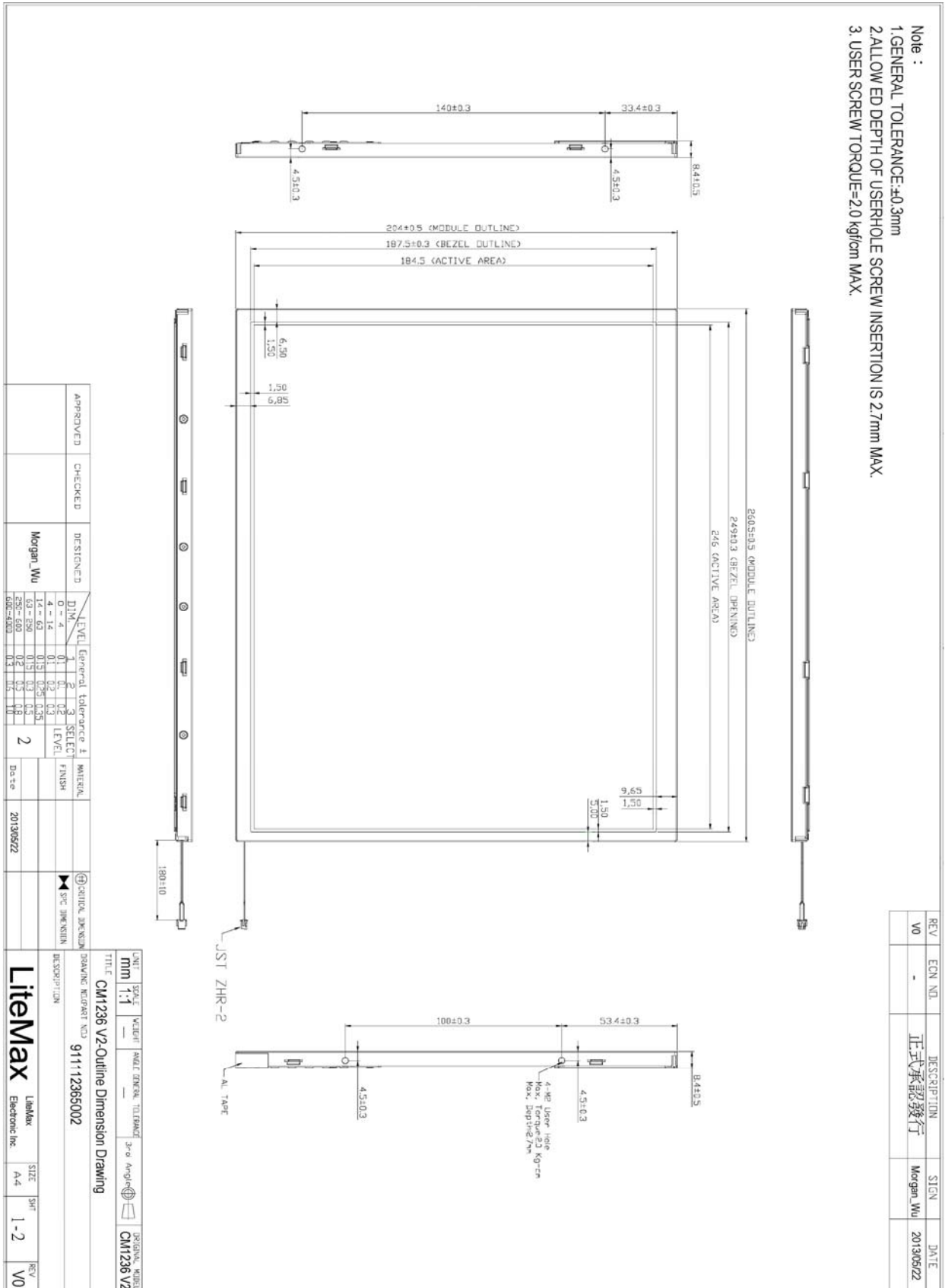
**DLH**= Panel+LED Driving Board+Control Board



# Mechanical Drawing

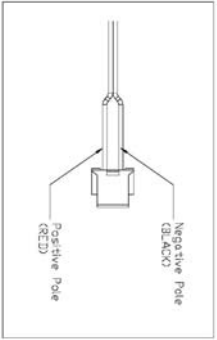
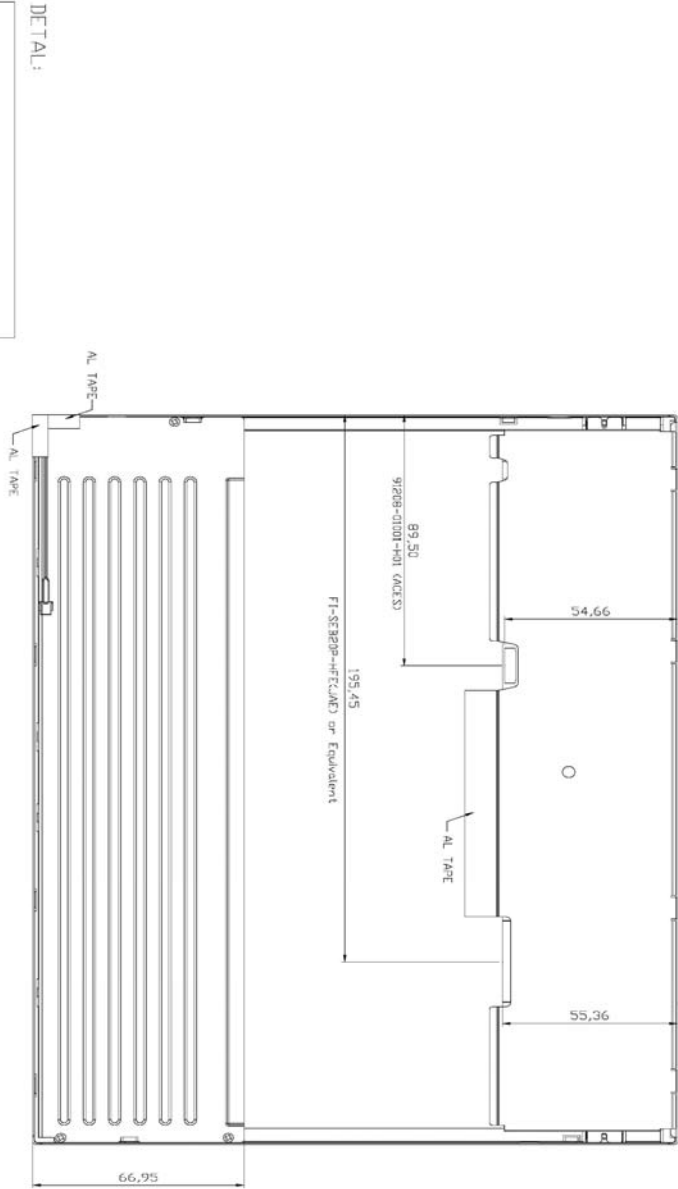
## Outline Dimensions

Unit:mm





- Note :
1. GENERAL TOLERANCE :±0.3mm
  2. ALLOW ED DEPTH OF USERHOLE SCREW INSERTION IS 2.7mm MAX.
  3. USER SCREW TORQUE=2.0 kgf/cm MAX.



APPROVED	CHECKED	DESIGNED	LEVEL			General tolerance ±	WATERAL	SECTION DIMENSION	TITLE	UNIT	SCALE	WEIGHT	ANGLE	GENERAL TOLERANCE	3rd ANGLE	ORIGINAL MATERIAL
		Morgan_Wu	DIM.	1	2	3	FINISH	SPC DIMENSION	CM1236 V2-Outline Dimension Drawing	mm	1:1					CM1236 V2
			0 ~ 4	0.1	0.1	0.2	LEVEL		DRAWING NUMBER NO: 911112365002							
			4 ~ 14	0.1	0.2	0.3										
			14 ~ 50	0.15	0.25	0.35										
			50 ~ 250	0.15	0.3	0.5										

REV	ECN NO.	DESCRIPTION	SIGN	DATE
V0	-	正式承認發行	Morgan_Wu	2013/05/22



### Ordering Information

Part Number	Description
DLF1236-ENN-A11	12.1",1000nits,XGA,LID12A07,DC 12V, V02 (5 in 1)
DLH1236-ENN-I11	12.1",1000nits,XGA,LID12A07,AD6038GD,DC 12V,V02 (5 in 1)

### Optional Accessories

Part Number	Description
840612051100	ADAPTER.12V.5A.60W.EA1050A,P
810618301010	CABLE.POWER.AC.1830mm USA type
810618301090	CABLE,POWER,AC,1830mm Europe type
810618301050	CABLE.POWER.AC.1830mm UK type
810618301170	CABLE.POWER,AC,1830mm Australia type
810618301030	CABLE.POWER.AC.1830mm Japan type