



DLF1062 / DLH1062

10.4" TFT LCD, LED Backlight 400nits,SVGA

10.4" TFT LCD panel, built-in 400 nits LCD display, Low Power Consumption, suitable for kiosk, advertising, POS, marine, transportation, gaming, studio display, gas pump.

Key Features

- LED Backlight
- High Shock & Vibration Resistance
- Low Power Consumption
- Wide Operation Temperature. (-20°C ~ 60°C)
- High Uniformity
- Low EMI Noise
- Wide Dimming
- Life Expectancy



Specifications

V1

Model No.	DLF1062	DLH1062
Description	10.4" TFT LCD, LED Backlight 400 nits, SVGA	
Display Area (mm)	210.2 (H) x 158.4(V) mm	
Brightness	400 cd/m ²	
Resolution	800 x 600 (SVGA)	
Contrast Ratio	400 : 1	
Pixel Pitch (mm)	0.264(H) x 0.264(V)	
Viewing Angle	+45°~-65°(H), +65°~-65°(V)	
Display Colors	262,144 colors	
Response Time (Typical)	25ms (Typical)	
Sync	LVDS	
Power Consumption	2.3W	7.2W
Dimensions (mm)	236(W) x 176.9(H) x 5.6(D)mm	
Weight (Net)	295g	
LED Driving Board	LID10A	
Control Board (Optional)	<input type="checkbox"/> AD5621GA <input type="checkbox"/> AD5621GD <input type="checkbox"/> AD5766GDVA <input type="checkbox"/> AD2662GDVAR	
<input type="checkbox"/> AD5621GA	VGA+Audio	
<input type="checkbox"/> AD5621GD	VGA+DVI	
<input type="checkbox"/> AD5766GDVA	VGA+CVBS+S-Video+Audio (Optional DVI)	
<input type="checkbox"/> AD2662GDVAR	VGA+DVI (Optional S-Video/ Component / Audio)	
F / R Control Button	<input type="checkbox"/> 5 Key <input type="checkbox"/> 4 Key	
<input type="checkbox"/> 5 Key	Power Switch, Menu, Select (+,-), Auto	
<input type="checkbox"/> 4 Key	Power Switch, Menu, Select (+,-),	
OSD Menu	Brightness, Contrast, H/V Position, Color, Phase, Clock...	
Optional	<input type="checkbox"/> AOT <input type="checkbox"/> Touch Screen	

Specifications are subject to change without notice.

All brands or product names are trademarks or registered trademarks of their respective companies.

DLF= Panel+LED Driving Board

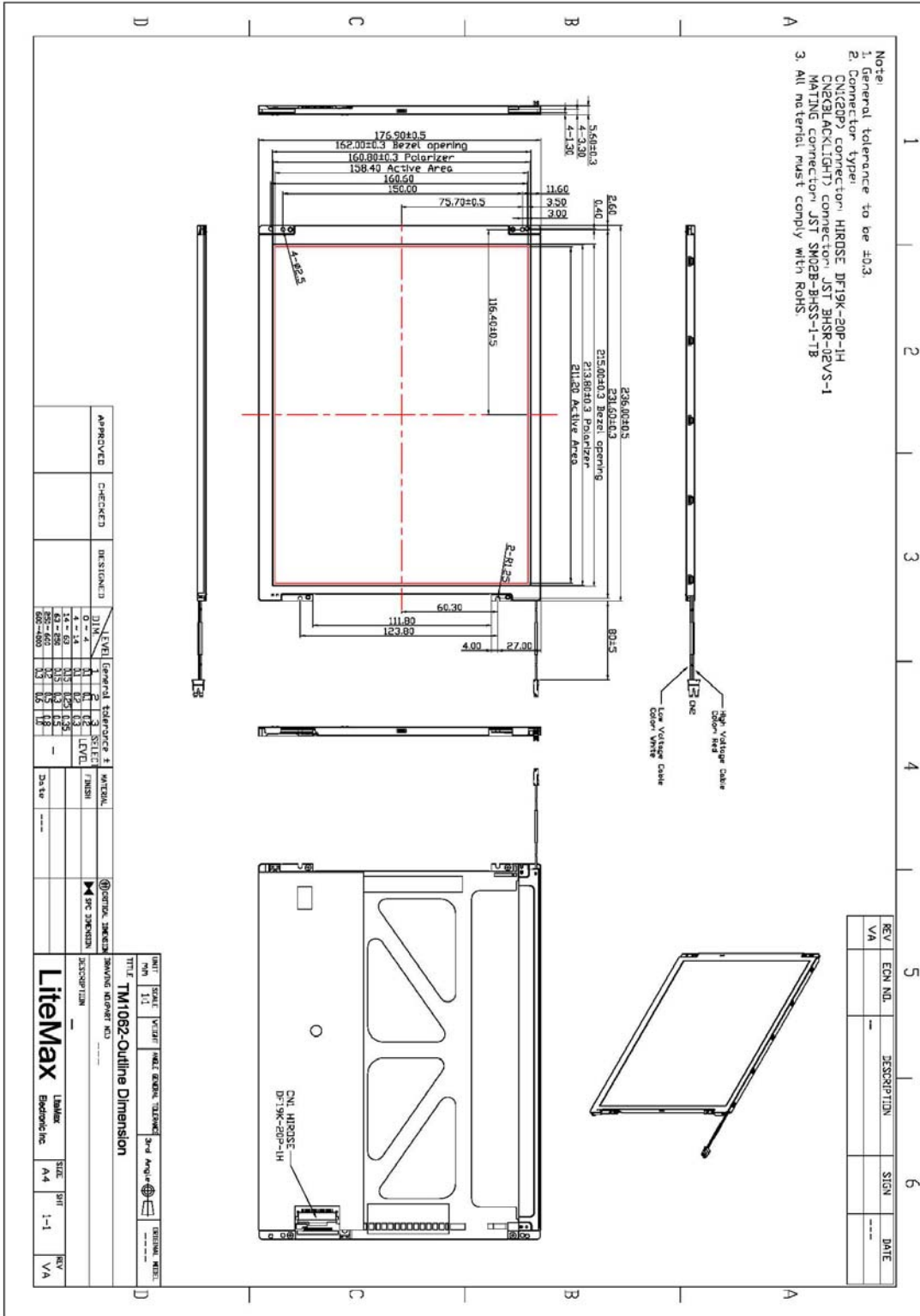
DLH= Panel+LED Driving Board+Control Board



Mechanical Drawing

Outline Dimensions

Unit:mm





Ordering Information

Model Name	Description
DLF1062-ENN-A01	10.4",400nits,SVGA,LID10A08,V01
DLH1062-ENN-A01	10.4",400nits,SVGA,LID10A08,AD5621GA,V01

Optional Accessories

Part Number	Description
840612051100	ADAPTER.12V.5A.60W.EA1050A,P
810618301010	CABLE.POWER.AC.1830mm USA type
810618301090	CABLE,POWER,AC,1830mm Europe type
810618301050	CABLE.POWER.AC.1830mm UK type
810618301170	CABLE.POWER,AC,1830mm Australia type
810618301030	CABLE.POWER.AC.1830mm Japan type