



## DLF0835 V2 / DLH0835 V2

### 8.4" TFT LCD, LED Backlight 1000nits, SVGA(800x600)

8.4" TFT LCD panel, built-in 1000 nits high bright for sunlight readable LCD display, high transmittance color filter, high transmission polarizing plates, Low Power Consumption, suitable for kiosk, advertising, POS, marine, transportation, gaming, studio display, gas pump.

#### Key Features

- Sunlight Readable
- LED Backlight
- High Shock & Vibration Resistance
- Low Power Consumption
- High Uniformity
- Low EMI Noise
- Wide Dimming
- Life Expectancy
- Operation Temperature: -30°C ~ 75 °C (Panel Surface Display Area)



### Specifications

Preliminary

Model No.	DLF0835 V2	DLH0835 V2
Description	8.4" TFT LCD, LED Backlight 1000 nits, SVGA	
Display Area (mm)	170.4(H) x 127.8(V)	
Brightness	1000 cd/m <sup>2</sup>	
Resolution	SVGA (800 x 600)	
Contrast Ratio	450 : 1	
Pixel Pitch (mm)	0.213 x 0.213	
Viewing Angle	130°(H), 115°(V)	
Display Colors	16.2M / 262K	
Response Time (Typical)	35 ms	
Sync	LVDS	
Power Consumption	5.6W	
Dimensions (mm)	199.5(W) x 154(H) x 12.45(D)	
Weight (Net)	0.33Kg	
LED Driving Board	LID08A05	
Control Board (Optional)	<input type="checkbox"/> AD5621GA <input type="checkbox"/> AD5621GD <input type="checkbox"/> AD2662GDVAR	
<input type="checkbox"/> AD5621GA	VGA+Audio	
<input type="checkbox"/> AD5621GD	VGA+DVI	
<input type="checkbox"/> AD2662GDVAR	VGA+DVI (Optional S-Video/ Component / Audio)	
F / R Control Button	<input type="checkbox"/> 5 Key <input type="checkbox"/> 4 Key	
<input type="checkbox"/> 5 Key	Power Switch, Menu, Select (+,-), Auto	
<input type="checkbox"/> 4 Key	Power Switch, Menu, Select (+,-),	
OSD Menu	Brightness, Contrast, H/V Position, Color, Phase, Clock...	
Optional	<input type="checkbox"/> AOT <input type="checkbox"/> Touch Screen	

Specifications are subject to change without notice.

All brands or product names are trademarks or registered trademarks of their respective companies.

DLF= Panel+LED Driving Board

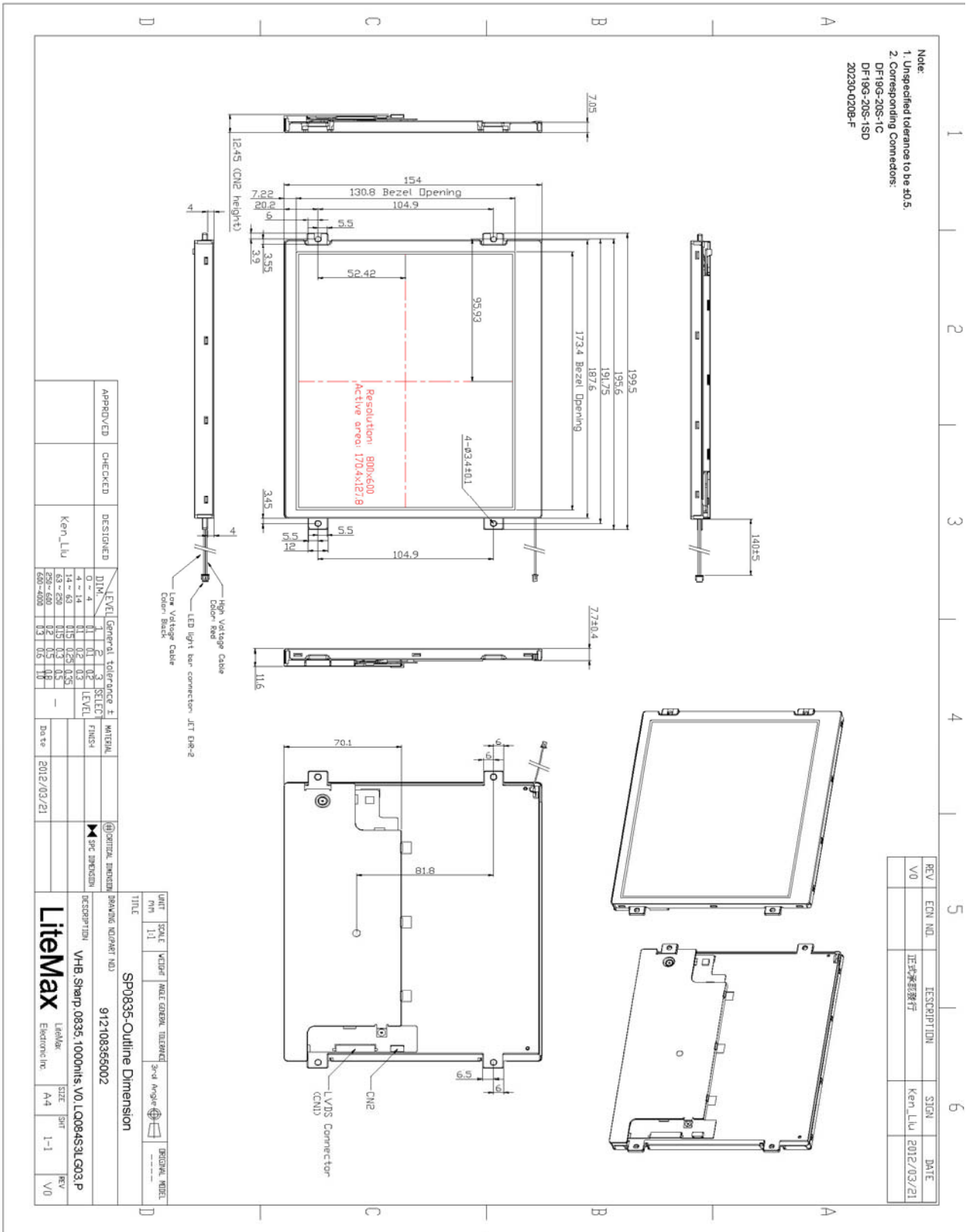
DLH= Panel+LED Driving Board+Control Board



# Mechanical Drawing

## Outline Dimensions

Unit:mm





### Ordering Information

Model Name	Description
DLF0835-ENN-A01	8.4",800nits,SVGA, LID08,V01
DLH0835-ENN-A01	8.4",800nits,SVGA, LID08,AD5621GA,V01
DLH0835-ENN-B01	8.4",800nits,SVGA, LID08,AD5621GD,V01

### Optional Accessories

Part Number	Description
810618301010	CABLE.POWER.AC.1830mm USA type
810618301090	CABLE,POWER,AC,1830mm Europe type
810618301050	CABLE.POWER.AC.1830mm UK type
810618301170	CABLE.POWER,AC,1830mm Australia type
810618301030	CABLE.POWER.AC.1830mm Japan type