

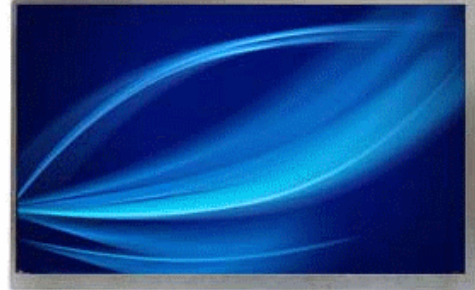


DLF/DLH0765
7" W TFT LCD, LED Backlight 1000nits, 1024x600

DLF/DLH0765 TFT LCD monitor, built-in 1000 nits high brightness for sunlight readable display. It offers the best visibility, performance and cost effective value. The high level of brightness together with the optimal contrast ratio renders high quality images and enhances legibility. With its fast response time and LED backlight technology, the monitor brings remarkable display quality and durability for your applications. Suitable for marine, military, medical, and industrial application.

Key Features

- Sunlight Readable
- LED Backlight
- High Shock & Vibration Resistance
- Low Power Consumption
- Wide Operation Temperature (-30°C ~ 80°C)
- High Uniformity
- Low EMI Noise
- Wide Dimming
- Life Expectancy



Specifications

V1

Model No.	DLF0765	DLH0765
Description	7" TFT LCD, LED Backlight 1000 nits, 1024x600	
Backlight	LED Backlight	
Display Area (mm)	153.6(H) × 90.0(V)	
Brightness	1,000 cd/m ²	
Resolution	1024 x 600	
Contrast Ratio	700 : 1	
Pixel Pitch (mm)	0.05(H) x 0.15(V)	
Viewing Angle	150°(H), 145°(V)	
Display Colors	262k colors	
Response Time (Typical)	25 ms	
Power Consumption	4.5W	7W
Dimensions (mm)	165.75 (W) × 105.39(H) × 5.2(D)	
Weight (Net)	0.24Kg	
LED Driving Board	LID07B	
Control Board (Optional)	<input type="checkbox"/> AD2662GDHM <input type="checkbox"/> AD2662GDHMVAR	
<input type="checkbox"/> AD2662GDHM	VGA+DVI+HDMI	
<input type="checkbox"/> AD2662GDHMVAR	VGA+DVI+HDMI (Optional CVBS / S-Video/ Component / Audio)	
OSD Control Button	<input type="checkbox"/> 4 Key	
<input type="checkbox"/> 4 Key	Power Switch, Menu, Select (+,-),	
OSD Menu	Brightness, Contrast, H/V Position, Color, Phase, Clock...	
Optional	<input type="checkbox"/> AOT <input type="checkbox"/> Touch Screen <input type="checkbox"/> Waterproof	

Specifications are subject to change without notice.

All brands or product names are trademarks or registered trademarks of their respective companies.

DLF= Panel+LED Driving Board

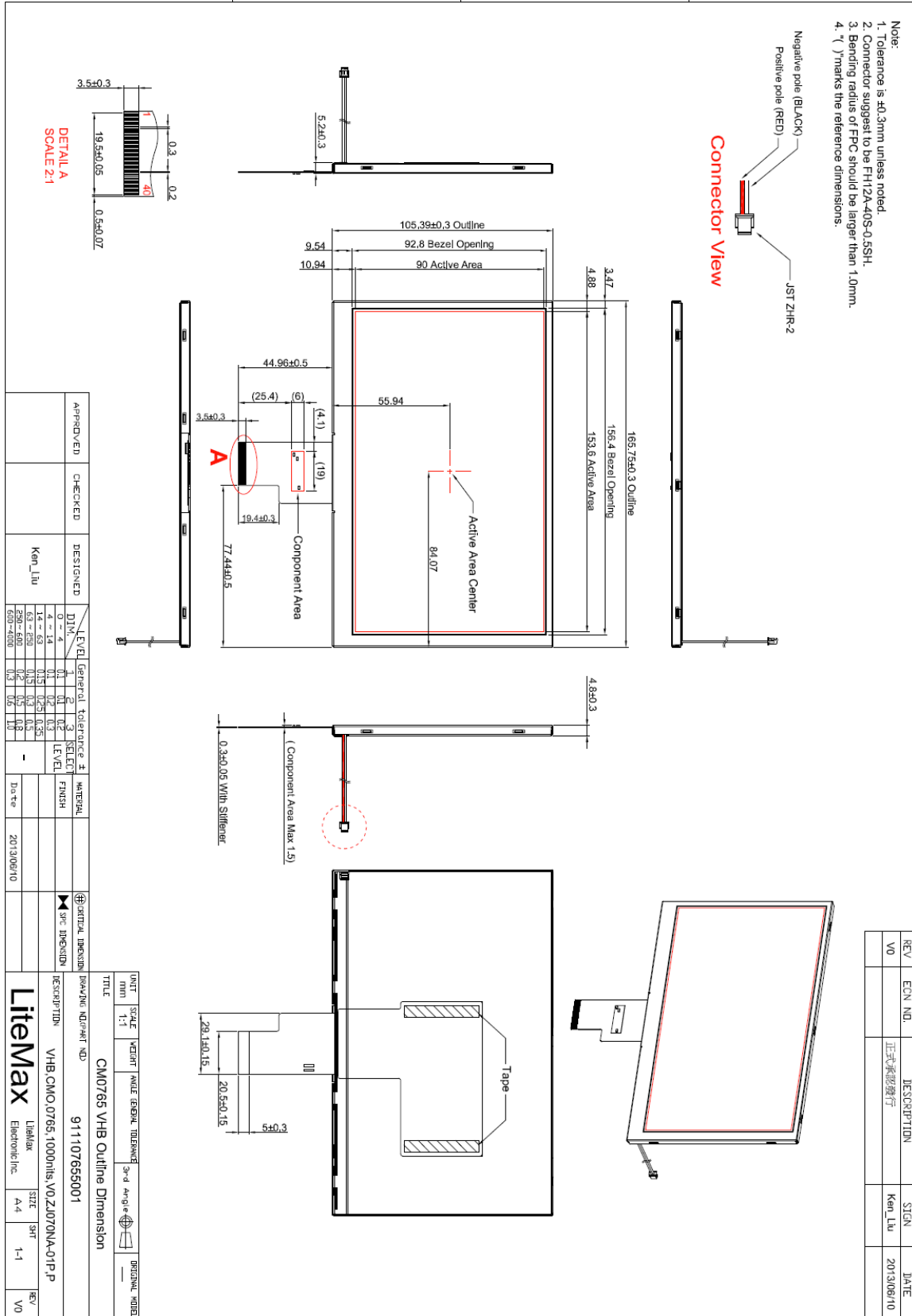
DLH= Panel+LED Driving Board+Control Board



Mechanical Drawing

Outline Dimensions

Unit:mm





Ordering Information

Part Number	Description
DLF0765-ENN-A01	7",1000nits,1024*600,LID7B,5-in-1,V1
DLH0765-ENN-G01	7",1000nits,1024*600,LID7B,AD2662GDHM,5-in-1,V1

Optional Accessories

Part Number	Description
840612031100	ADAPTER.12V.3.33A.40W,PAA040F,P
810618301010	CABLE.POWER.AC.1830mm USA type
810618301090	CABLE,POWER,AC,1830mm Europe type
810618301050	CABLE.POWER.AC.1830mm UK type
810618301170	CABLE.POWER,AC,1830mm Australia type
810618301030	CABLE.POWER.AC.1830mm Japan type