



DLF0754/ DLH0754 V2

7" TFT LCD, LED Backlight 800nits,1280x800

DLF0754/ DLH0754 V2 is 7" TFT LCD Module, built-in 800 nits high brightness, high transmittance color filter, high transmission polarizing plates, Lower Power Consumption, suitable for outdoor tablet, POS, gaming.

Key Features

- Brightness: 800nits
- LED Backlight
- 1280x800 High Definition
- Wide Viewing Angle IPS panel
- High Uniformity
- Low EMI Noise
- Thin & Light



Specifications

V1

Model No.	DLF0754 / DLH0754 V2
Description	7" TFT LCD, LED Backlight 800 nits, 1280x800
Original Panel	CMO,HJ070IA-02F
Display Area (mm)	149.76(H)×93.6(V)
Brightness	800 cd/m ²
Resolution	1280 x 800
Contrast Ratio	800 : 1
Pixel Pitch (mm)	0.039 x 0.117
Viewing Angle	+89°~ -89°(H), +89°~ -89°(V)
Display Colors	16.7M 8bits colors
Response Time (Typical)	15/20(Typ)ms
Power Consumption	3.5W
Dimensions (mm)	161 x 107 x 2.51mm (4.3mm with PCBA)
Weight (Net)	115g
LED Driving Board	On Board
Control Board (Optional)	<input type="checkbox"/> AD2662GDHM
<input type="checkbox"/> AD2662GDHM	VGA+DVI+HDMI
F / R Control Button	<input type="checkbox"/> 5 Key <input type="checkbox"/> 4 Key
<input type="checkbox"/> 4 Key	Power Switch, Menu, Select (+,-),
OSD Menu	Brightness, Contrast, H/V Position, Color, Phase, Clock...
Optional	<input type="checkbox"/> AOT <input type="checkbox"/> Touch Screen

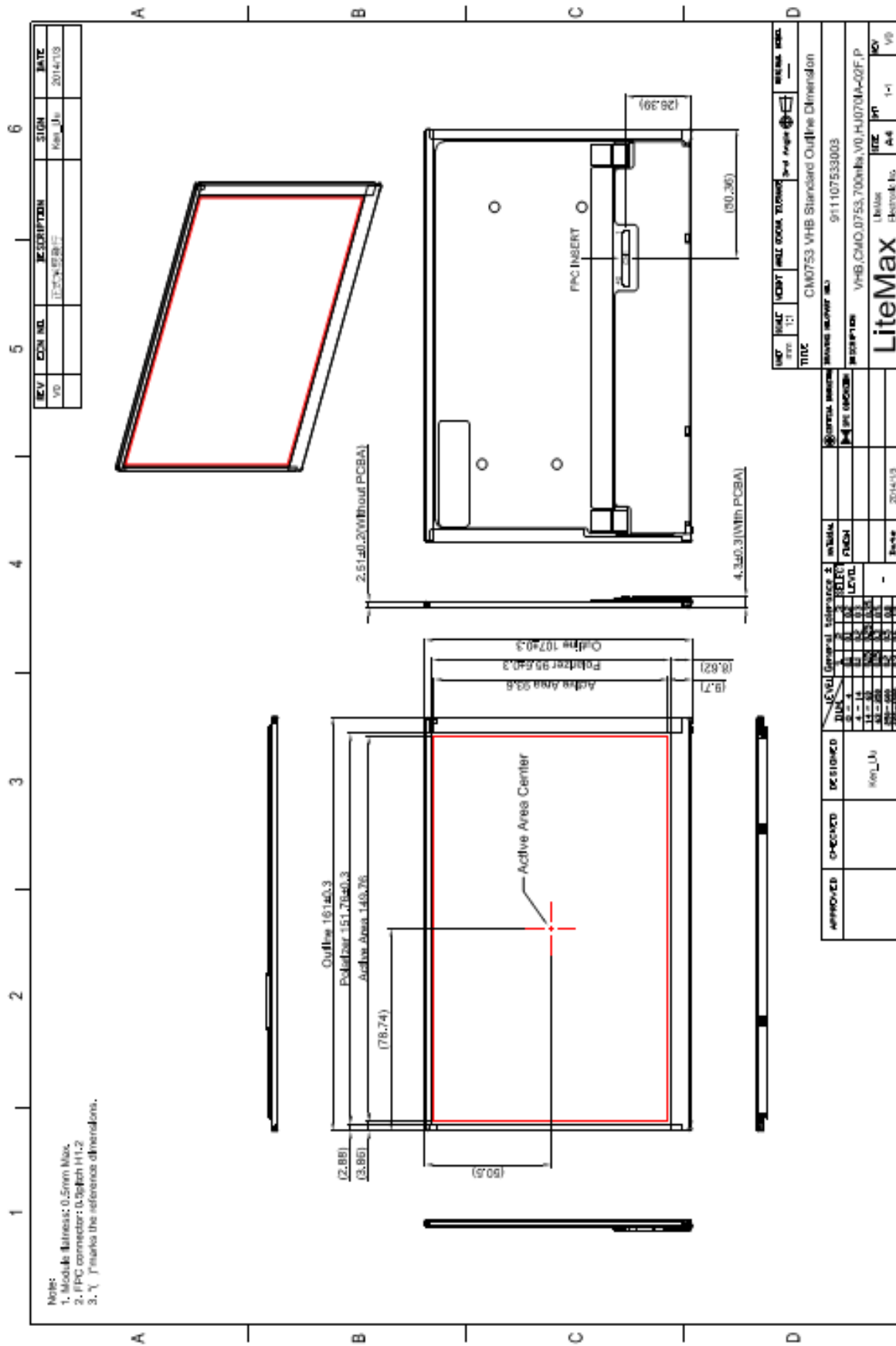
Specifications are subject to change without notice.

All brands or product names are trademarks or registered trademarks of their respective companies.

DLF= Panel+LED Driving Board

DLH= Panel+LED Driving Board+Control Board

Mechanical Drawing



Ordering Information



Model Name	Description
DLF0754-ENN-A11	7",800nits,1280*800,V02(10 in 1)
DLH0754-ENN-G11	7",800nits,1280*800,AD2662GM,V02(10 in 1)

Optional Accessories

Part Number	Description
810618301010	CABLE.POWER.AC.1830mm USA type
810618301090	CABLE,POWER,AC,1830mm Europe type
810618301050	CABLE.POWER.AC.1830mm UK type
810618301170	CABLE.POWER,AC,1830mm Australia type
810618301030	CABLE.POWER.AC.1830mm Japan type